

IDVMedia Development Suite For Digital Media Applications and Services



IDVMedia Suite

SpotMagic's IDVMedia™ (Intelligent Dynamic Virtual Media) Suite is a rapid development platform empowering digital media solution developers to quickly and easily assemble entirely-secure, Internet-enabled, interactive applications for commercial broadcasting, interactive simulcasts, IPTV, Dynamic Screen Networks, Kiosks, and Web Services.

The IDVMedia Suite V4.7 provides all the tools and building blocks needed to rapidly prototype, complete, and manage interactive, digital audio and video media and to build, test and modify custom Web Service applications and content. The IDVMedia Suite also provides the two things that are critically important to solution developers:

- Trouble-free integration with existing systems and technologies.
- The ability to quickly adapt to change and grow.

IDVMedia technology is uniquely designed to enable connections to many network transports, media types, code objects, and hardware in use today, or being developed for the future. IDVMedia simplifies making those connections through its unifying intelligent object architecture. This unification enables the rapid assembly of combinations of content, legacy technologies and hardware with IDVMedia acting as the "glue".

Components

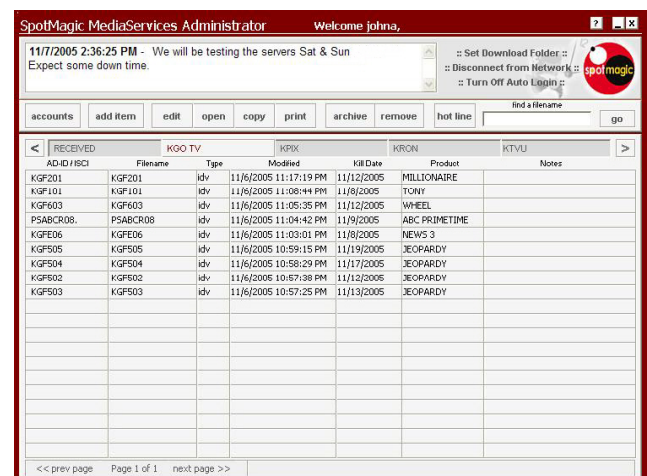
SpotComposer is the central mechanism with which IDVMedia is created and manipulated throughout the development and deployment process. SpotComposer includes the ability to work with both live online or offline content and data in a work-grouped environment and provides the framework for other IDVMedia development and management components.

SpotTuner is the IDVMedia communication and content engine resident on IDVMedia enabled client devices. The SpotTuner manages everything necessary for acquiring and reproducing an IDVMedia application or show. IDVMedia rendered within the SpotTuner supports most media types, including: bitmapped and vector graphics, text formats, HTML, any audio or video format, Flash, streaming file types, code objects, and many more. (*Get SpotTuner and view the [portfolio](http://www.spotmagic.com) at www.spotmagic.com*)

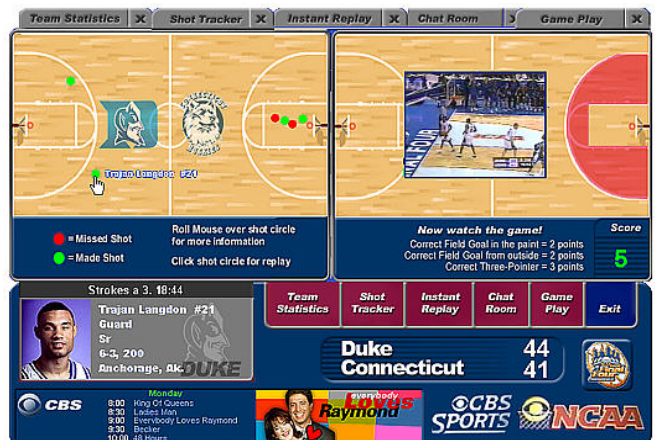
Dynamic Screen Module is a SpotTuner lockdown and management component. DSM runs as a shell on top of Windows operating systems, controlling access to IDVMedia enabled applications. DSM integrates with SpotMagic Broadcast systems to enable remote machine management features on large networks of client devices.

Broadcast Scheduling applications enable and control the synchronous timed broadcast and screen-by-screen targeting of content across both private and commercial audio and video networks and consumer iTV and PC screens.

Media Services Asset Management is a fully customizable application and server technology for acquiring, cataloging, sharing, previewing and archiving any form of digital content.



SpotMagic Media Services - KGOTV administration application



CBS Sports interactive simulcast for PC's